

FCC - Frilo.Control.Center

FRILO Software GmbH

www.friilo.com

info@friilo.com

As of 12/03/2019

The screenshot displays the FRILO Control Center software interface. The main window is titled "Frio.Control.Center - Project - FDD-project EN". The interface is divided into several sections:

- Project Folder:** A tree view showing the folder structure under "Document.Designer\FDD-project". The "FDD-project" folder is selected, showing subfolders like "Documentation", "Example projects", "Examples", "Localization", "Mauerwerk", "Mein Projekt", "Mein Projekt_bak", and "Video-Clips".
- Projects:** A table listing project items with columns for Item, Name, Folder, Sync, Pad, Created, and Changed.
- Items:** A detailed list of items with columns for D, Name, Description, Program, Created, and Changed. The item "BBR-001" is highlighted, with a description of "Soil analysis".
- Preview:** A technical drawing showing a cross-section of a structure, likely a foundation or wall, with various layers and dimensions.

Item	Name	Folder	Sync	Pad	Created	Changed
21	FDD-Bsp	Document.Designer\FDD-proje			16.05.2014 10:53	17.08.2018 10:04
23	FDD-project	Document.Designer\FDD-proje	✓		25.05.2012 17:36	23.11.2019 11:50
20	FDD-project EN	Document.Designer\FDD-proje			13.02.2014 11:47	12.03.2019 09:42

D	Name (20)	Description	Program	Created	Changed
B6	403	Punching shear - column 402	B6	29.05.2012 16:37	05.03.2014 14:34
B7	302	R.C. - stair h=18cm	B7	17.02.2012 12:07	05.03.2014 14:25
BBR	BBR-001	Soil analysis	BBR	30.04.2010 16:14	12.03.2019 09:42
D9	201	Rafter main roof :5 degrees	D9	12.12.2011 09:39	05.03.2014 14:21
DLT	203	Trapezoidal sheet	DLT	05.06.2012 14:35	05.03.2014 14:23
DLT	303	Bottom beam axis B1 and A4	DLT	12.03.2012 07:51	05.03.2014 14:28
ESK	200	Roof bracing	ESK	05.06.2012 14:36	05.03.2014 14:20
FD	401	Foundaton axis A	FD	18.04.2012 13:51	05.03.2014 14:33
FDD	Item list		FDD	08.03.2019 11:08	08.03.2019 11:08
FDD	404 - HALFEN	Verification Halfer	FDD	12.11.2012 11:34	12.11.2012 11:34
FDD	roofoverview		FDD	23.10.2012 10:13	23.10.2012 10:13
HC1	402	Timber column 12/12cm	HC1	21.02.2012 16:32	05.03.2014 14:33
HC1	304	Timber column 12/12cm	HC1	21.02.2012 16:32	05.03.2014 14:29

FCC – Frilo.Control.Center

Contents

Overview	3
Starting Frilo.Control.Center	4
User interface	5
Folder	7
Projects	8
Items	10
Programs	12
Extras	13
Helpful application hints	14
Context menu	14
First steps	14
Export/save, import/restore projects	16
Synchronize projects	17
Import/export items	17
Page layout	17

Basic Documentation – Overview

In addition to the individual program manuals, you will find basic explanations on the operation of the programs on our homepage www.frilo.com ▶ Support ▶ Articles/Information ▶ Basic operating instructions.

Overview

Frilo.Control.Center, abbreviated to FCC, is the central environment for the starting of FRILO applications and the management of projects, items and other data.

The system is based on the following structure:

Project folder	freely selectable project storage folders
Projects	freely selectable number of projects in a project folder
Items	freely selectable number of items in a project

Benefits of the Frilo.Control.Center

- **Unlimited** network compatibility
- Well-structured filing of your projects and items due to an intelligent folder system
- Fast and safe access to your data due to a reliable database system (Firebird, SQLCE....)

Old and new data management *(for users of very old FRILO versions)*

Import: To edit and process "old projects/items" (FL-Manager or F+L-Explorer) with the FCC data management you must import these projects. A comfortable selection dialog allows you to do this in a few minutes.

Data safety: Your "old" projects/items will be preserved unchanged, because the imported projects are stored separately (which prevents the former versions to be overwritten by the new system).

Compatibility: New FCC-projects can be exported for the "old" data management system" to ensure that you can open and edit new projects on machines on which only the old version is installed.

Distributed data management at different locations

In the FCC-concept, **data are managed** centrally via the database.

Remote WAN access is supported by the system.

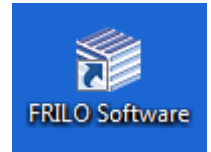
The data themselves such as the individual item files are stored separately in user-defined folders.


The system allows data keeping and storage on several sites and central management at the same time. All projects are available to all users.

You can find more information in the document [FSN_eng.pdf](#)

Starting Frilo.Control.Center

First, start Frilo.Software via the corresponding icon on your Windows® user interface. Launch Frilo.Control.Center from the Frilo.Software window.

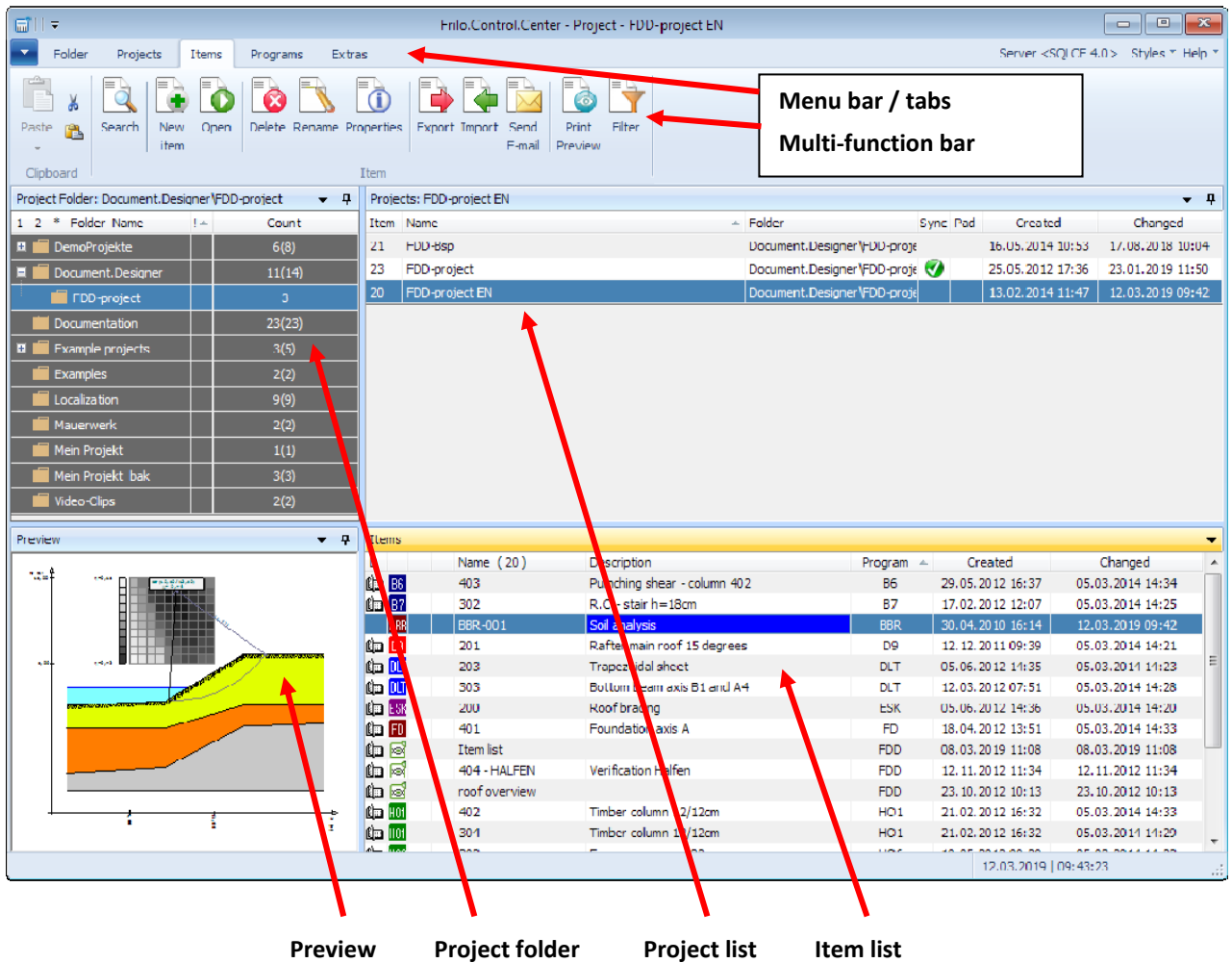


Use the button  to open a menu for configuring the FRILO program system. Furthermore you can start the Teamviewer here. By remote maintenance, our hotline can help you solving problems quickly and easily via the TeamViewer - together we can work directly on your screen.

Click "Documents" to display online update information, the FRILO newsletter and general information in PDF format.

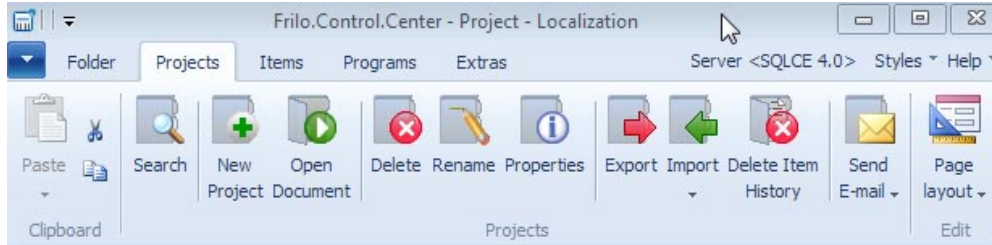


User interface



Menu bar / multi-function bar

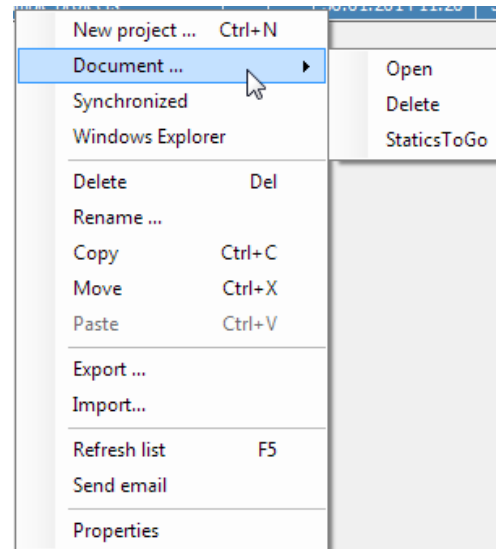
The menu options are shown as tabs. When selecting a menu option, the most important submenu options are displayed in the multi-function bar below in the form of icons marked with a descriptive name.



Importantnote:

Additional functions are available via the context menu (right mouse button).

Ill.: Multi-function bar of the menu option "Projects". To display a context menu, click right in the corresponding section (Project folder, Project list, Item list).

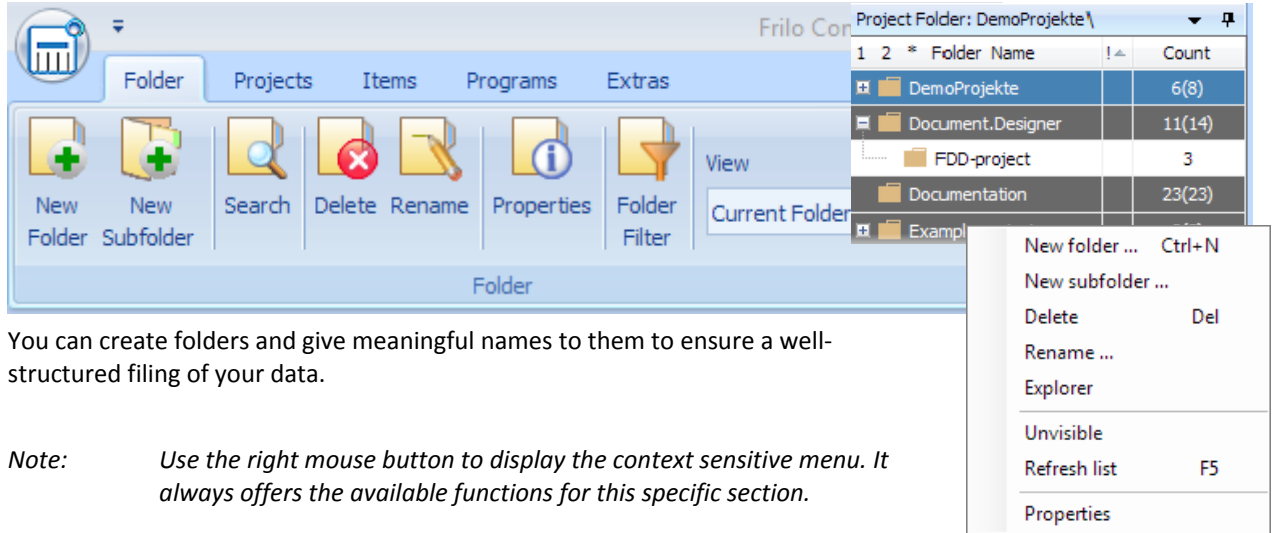


Tabs

- Folder see the chapter [Folder](#)
- Projects see the chapter [Projects](#)
- Items see the chapter [Items](#)
- Programs Start [programs](#) or demoversions directly
- Extras see the chapter [Extras](#)

- Server indicates the database server set via Configuration (local=localhost or the network server)
- Styles defines the color scheme of the user interface (blue, silver, black)
- Help online help, Support request by mail, teamviewer, patch and release information, update info and information about the license and the version

Folder



You can create folders and give meaningful names to them to ensure a well-structured filing of your data.

Note: Use the right mouse button to display the context sensitive menu. It always offers the available functions for this specific section.

New Folder allows you to create a new folder and specify a folder name and a storage path or select an existing storage location.

New Subfolder allows you to create a subfolder below the currently selected folder. Optionally, you can automatically set up a new project with this folder name.

Delete allows you to delete the selected folder **with all projects in it** after clicking OK in the confirmation prompt.

Rename allows you to change folder names

Explorer starts Windows Explorer

Unvisible allows you to hide the folder in the folder list. To make the folder visible again, click on the "Folder Filter" icon (2x), then on the now visible, but grayed folder (right mouse) and again on "Invisible".

Refresh list allows you to update the folder list, after adding subfolders by importing projects, for instance.

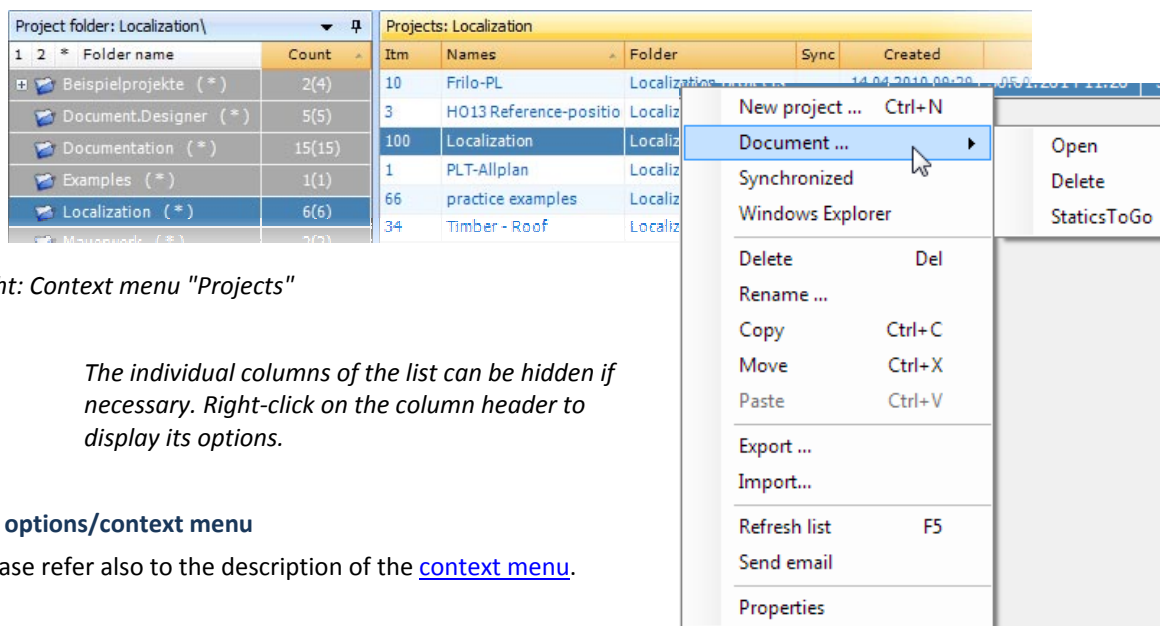
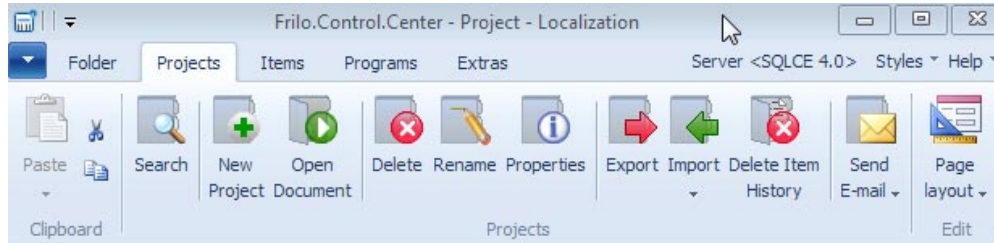
Properties allows you to display folder details and hide or display the folder on the network.

Note: Click to a folder to display the projects contained in it. The corresponding [project list](#) is displayed in the right window.

Projects

All projects of the selected folder are listed in the [project list](#).

The number of included items is shown in the "Item" column (Itm).



Ill. right: Context menu "Projects"

Note: The individual columns of the list can be hidden if necessary. Right-click on the column header to display its options.


Menu options/context menu

→ Please refer also to the description of the [context menu](#).

- New project** allows you set up a new project without any data in it.
- Document...** allows you to
 - open a project document in [Frilo.Document.Designer](#).
 - delete the document
 - mark the document for the app StaticsToGo.
- Synchronized** Synchronization with an external medium such as USB-Stick. It is also possible to synchronize the project with a Tablet-PC - the Frilo-App "StaticToGo" is required. See chapter "[Project synchronization](#)".

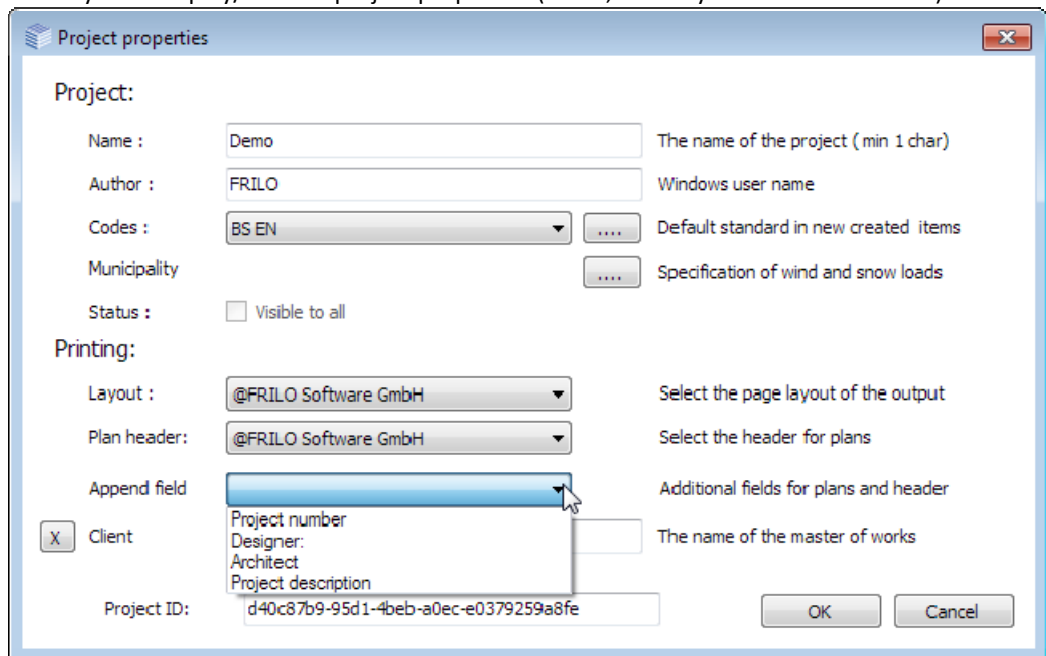


A synchronized project is marked with the symbol .

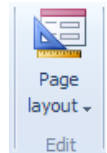
If no external medium is connected (USB...) the symbol  is displayed.

- Explorer** starts Windows Explorer
- Delete** allows you to delete the selected project from the list after clicking OK in the confirmation prompt. You can select several projects for deletion with the help of the Shift or the Ctrl key. [Extras](#) allows you to restore deleted projects unless you have removed them completely from your computer with the help of the "Clean up folder" function.
- Rename** allows you to change a project name.

- Copy allows you to copy a single or several projects for subsequent pasting into another folder.
- Move allows you to cut the selected project and paste it into a subsequently selected folder by clicking right in the area of the project list and selecting "Paste" in the context menu.
- Paste allows you to paste a previously copied project in the selected folder.
- Export... allows you to save projects in freely selectable folders. Default is D:\FriloStatik\Backup. The files have the extension "archive".
- Import... allows you to import projects, restore saved projects, see [Saving, importing and exporting projects](#). You can also restore older projects that were created with FLManager (*.flbak files).
- Refresh List allows you to update the project list (after deleting projects for instance).
- Send email allows you to send a project per e-mail as an *.archive file. The recipient can import this project with the help of the restore function. You can add additional files to the enclosure.
- Properties allows you to display/edit the project properties (name, used layout and other details).



Edit page layout The page layout (page header, margins, font types...) is project specific. It is stored together with each project and included in the export data or the mail dispatch. You can edit the project-specific page layout with the help of this function. See also the description of the [Page layouts](#) in FDD Frilo.Document.Designer.



Items

All items of the selected project are listed in the [item list](#).

The screenshot shows the 'Items' menu with options: New ..., Open ..., Print preview, Item history, As template, Notes..., Windows Explorer, Delete, Duplicate, Copy, Move, Paste, Rename ..., Support request ..., Send as mail, Im / Export, Word Export, Program filter, Refresh list, and Properties. Below the menu is a table of items:

D	Names (100)	Description	Program	Created	
	Building withbottomplate		GEO	02.12.2003 10:39	18.1
	Building PL		GEO	11.12.2001 13:27	18.1
	Building to B5		GEO	11.12.2001 13:27	12.0
	HO1-2parts pendulum		HO1	16.05.2012 09:29	16.0
	HO11-EN	Timber/Roof	HO11	17.04.2012 10:13	12.0

Meaning of the column symbols

Item is included in the static document – open the document by doubleclick on this symbol

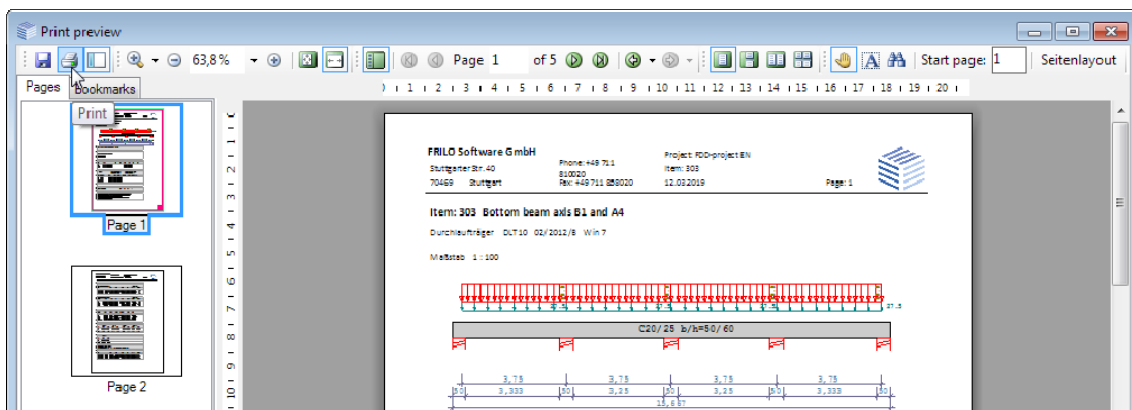
program abbreviation item is opened (important when networking) notice

Menu options/context menu

→ Please refer also to the description of the [context menu](#).

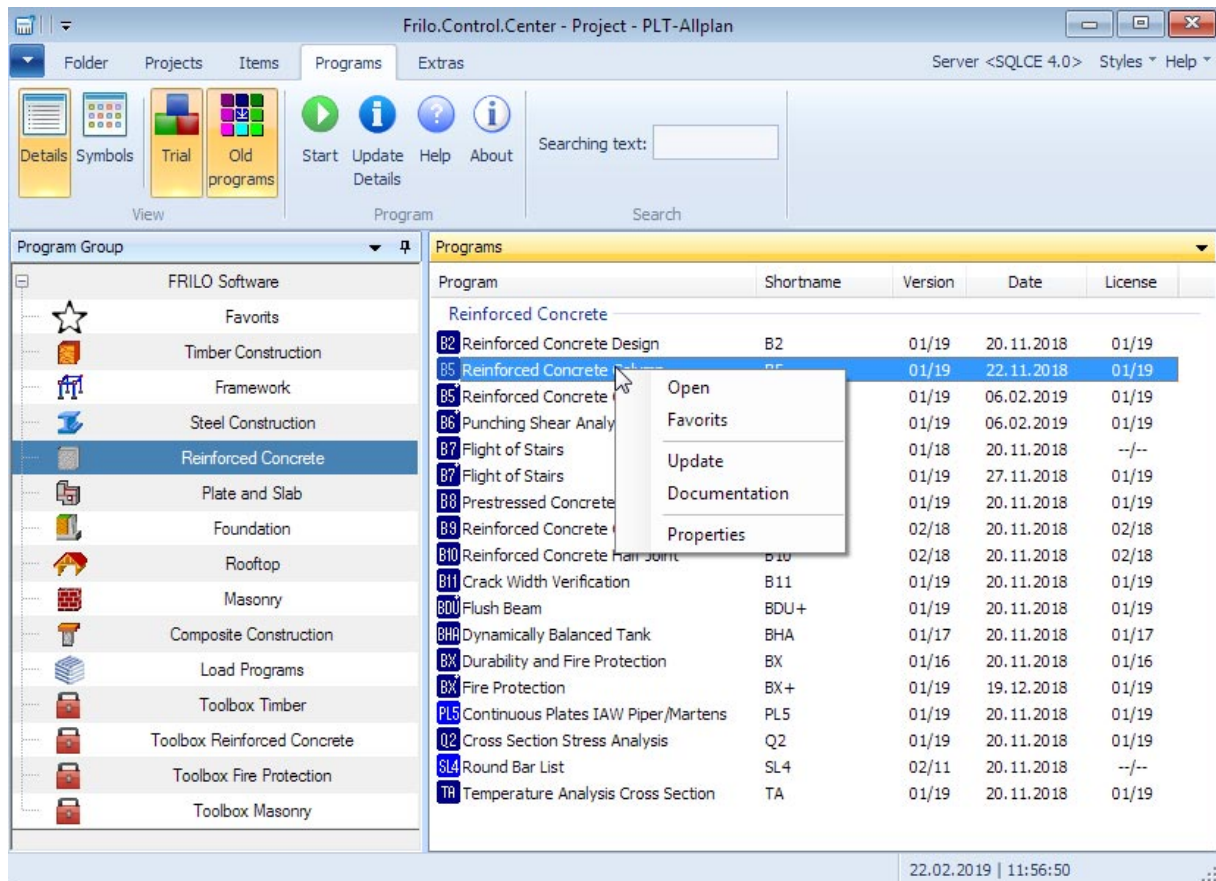
- New** Start the desired application, enter your data and save the item under the desired item name.
- Open** Allows you to open the selected item (also per double-click).
- Print preview** see [Output and printing](#). Displays a preview of the output data in the final layout. The print dialog is displayed when activating the icon "Print".
- Item history** When saving an item after editing, the current version is not overwritten but maintained as "older version" on the hard disk. You can open "older versions" via this function, if required.
- As template** Allows you to save the selected item as a template. Frequently used items can easily be defined by saving the basic item as a template and use it each time for the definition.
- Notes...** Dialog for creating one or more notes for this item - with options for priority, completeness, completion. See "Meaning of the column symbols" above.
- Explorer** starts Windows Explorer.
- Delete** Delete the selected item from the list after clicking OK in the confirmation prompt. To select several items for deletion use the Shift or Ctrl key. [Extras](#) allows you to restore deleted items unless you removed them completely from your computer using the "Clean up folder" function.
- Duplicate** Copy and paste of an item.
- Copy** Allows you to copy a single or several items for pasting them subsequently into another project. You can also move items with your mouse via drag & drop.

Move	Cuts the currently selected item and paste it into a subsequently selected folder and project via the context menu option "Paste".
Paste	Pastes a previously copied item into this or another project. If you paste it into the same project, it is marked as a duplicate with a name extension.
Rename	Change an item name.
Send as mail	Send an item per e-mail as an *.FLPos file. The recipient can import this item with the help of the import function. You can add additional files to the enclosure.
Im/Export	Import and export Frilo items (*.FLpos files) - the folder with the source files can be specified. You can import Frilo items that you have received via mail for instance. <i>Note: Drag & Drop items into the item-area.</i>
Word Export	Save the output of this item as an MS Word file (*.docx).
Program filter	The filter dialog allows you to select the applications associated to the items in the item list. In large projects with long item lists, you can find the desired item faster with the help of this filter.
Refresh list	Update the item list (after deleting items for instance).
Properties	Displays the item properties (name, directory and other details).
Print preview	Icon in the Ribbon: Preview of the formatted output. The print dialog is called up via the "Print" icon.



Programs

Here you can directly access the Frilo programs without prior definition of project folders, projects or other settings. The saving and naming of projects and positions is carried out directly from the "Save as dialog" of the respective program.



FRILO Software

Here all FRILO programs are listed in a single list.

Favorites

You can put together frequently used programs in a favorites list. To do this, right-click on the program and select "Favorites".

Trial

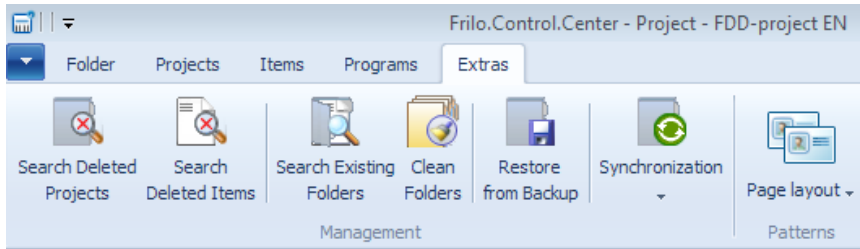
FRILO customers can view the FRILO demo programs here and test them for 30 days. So you do not have to install a demo version for a demo!

View update info / manual

Via the context menu (right mouse button) of each program you can call up the update info as well as manual / documentation.

Extras

You can find useful help functions on this tab.



Search Deleted Projects

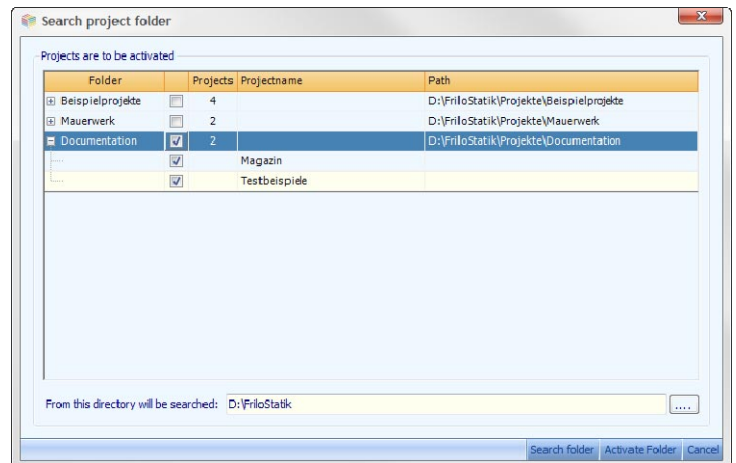
You can restore individual projects that you have deleted from a folder unless you have removed them completely with the "Clean folders" function. Select the project folder to search in. A list of the corresponding projects is displayed and you can select the projects to be restored.

Search Deleted Items

Same functionality for items as described in the previous paragraph for projects.

Search Existing Folders

This function allows you to search for project folders (containing Frilo projects) in a disk directory. You can select the starting point (sub directory) for the search.



Clean Folders

This function deletes finally and irrevocably those items and projects that you have removed from the view with the help of the menu option Delete.

Restore from Backup

If you are not backing up your backups using ▶ Projects ▶ Export (saving projects as *.archive file), but simply copy the original project folders, you can use this function to search for such copied projects. See also [export / save, import / restore projects](#).

Synchronization

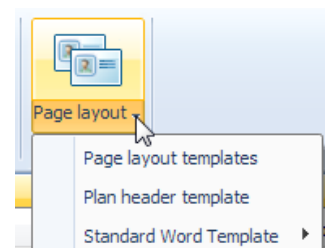
Displays synchronized projects on an external media (e.g., USB stick). See ▶ [Synchronize Projects](#).

Page Layout

Here you can manage templates for the page layout, ie for the page header, footer, margins, fonts and so on. Different standard templates are already predefined. You can edit them and save them as custom templates or create a template completely individually.

See ▶ [Projects](#) and FDD-Frilo.Document.Designer ▶ [Page layout](#).

Furthermore, templates for the "Plan header" (program [PLT](#)) can be edited.



Helpful application hints

Context menu

To display the context menu, click right in the corresponding section of the user interface ([Project folder](#), [Project list](#), [Item list](#)).

The context menu offers the functions that are available in the respective section. A right click in the area of the project list, for instance, displays a menu with all functions available for project management and editing.

Important note: The menu bar only displays the icons of the most important functions, whereas the context menu offers further available functions.

First steps

The following example shall show you briefly how to create a folder, a project and an item.

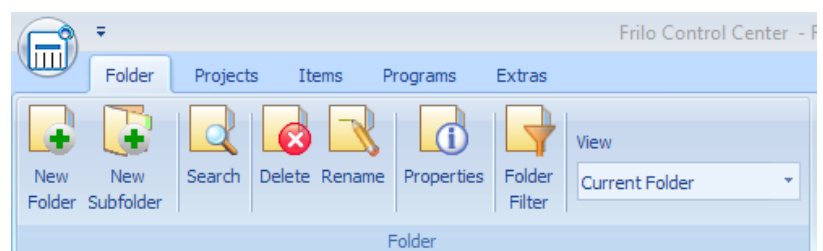
Launching the Frilo start environment

First, start Frilo Software via the corresponding icon on your Windows® user interface. Then launch Frilo.Control.Center (FCC).



Creating folders

Click in Frilo.Control.Center on the [Folder](#) tab to "New folder" and specify a folder name. We are going to set up a project in this folder in the following.



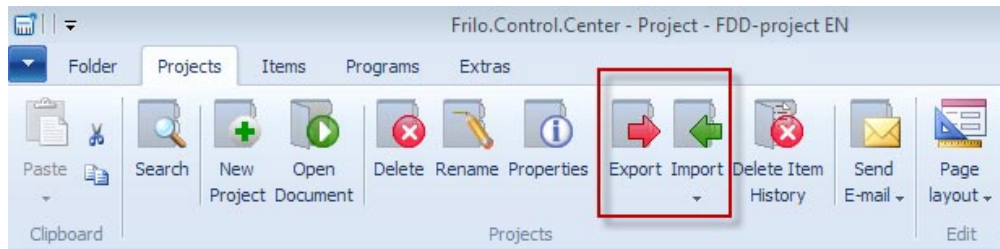
Creating projects

Click on the "Projects" tab and select the option "New project". Enter a name for the project. The empty project is now shown in the [Project list](#) of Frilo.Control.Center. We are going to set up an item in this project in the following.

Creating items

Click on the "Items" tab and select the option "New item". A selection window with all available Frilo applications is shown. Select an application and launch it per double-click. For our little exercise, define a small system, save it under an item name and exit the application. The newly created item is shown in the [Item list](#) of the previously created project.

Export/save, import/restore projects



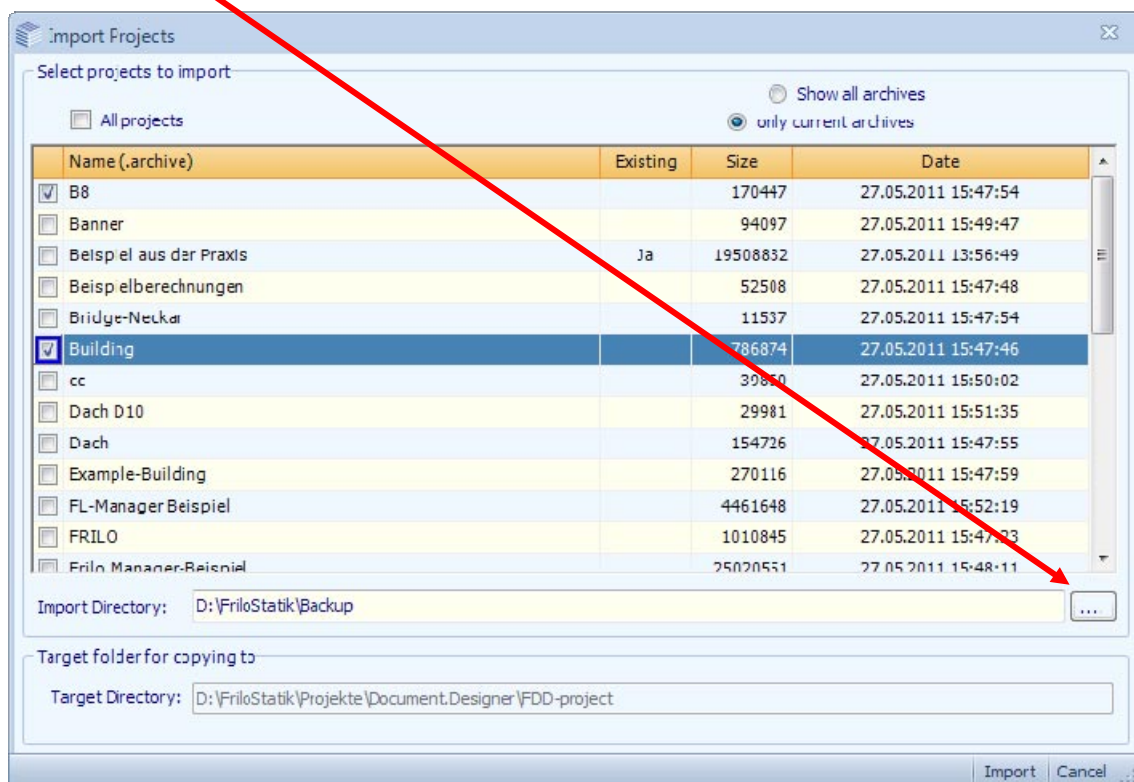
Export

Allows you to save projects in freely selectable folders. Default is D:\FriloStatik\Backup. The files have the extension "archive". Optionally, the PDF documents of projects can be excluded from export (for example, if the storage space is limited).

Import

In order to import/restore projects, for instance, select the [project folder](#) to which projects should be imported. Click to the "Projects" tab, select first "Import/export" and then "Import projects".

Select the path where the system should search for projects to be imported in the displayed dialog.



Select either individual projects to be imported or tick the option "All projects".

Click to "Import". If the imported projects are not shown in the FCC [project list](#), refresh the list via the F5 key or the corresponding option in the [context menu](#).

Synchronize projects


If you are working on different computers, you can synchronize the projects on these computers, e.g. via USB stick.


Example: You change a project on PC1, connect the USB stick and then synchronize the project - right-click on the project and click "[Synchronized](#)".

The folder FriloSync is created on the USB stick if this folder is not already present.

In this folder on the USB stick, the project is saved/synchronized.

Sync

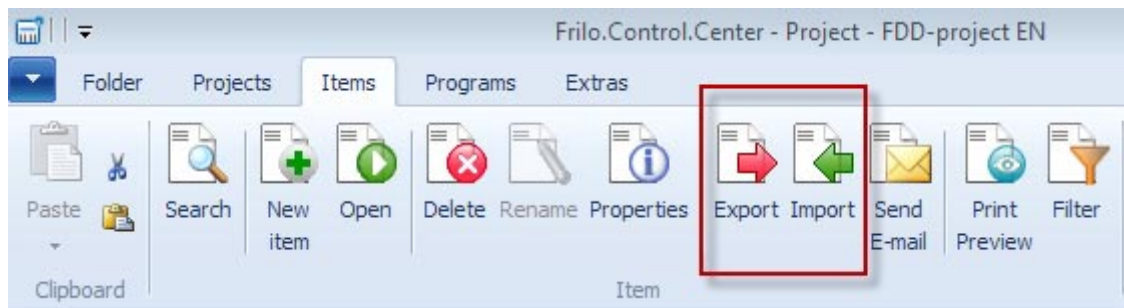
The synchronized project is marked with this icon: 

After logging off and removing the USB stick, synchronized projects are marked with this symbol: 

Then connect the USB stick to PC2. The projects in the FriloSync folder are now synchronized with the corresponding projects on PC2.

You can also click on Extras - Synchronization to display synchronized projects on the USB stick.

Import/export items



Click to the "Items" tab and then to the "Import/Export" icons. Exported items have the file extension "flpos".

Note: You can also use Drag & Drop into the item area of the Frilo.Control.Center.

Page layout

The page layout (page header, margins, font types...) is project specific. It is stored together with each project and included in the export data or the mail dispatch. You can edit the project-specific page layout with the help of the corresponding function on the "[Projects](#)" tab. See also the description of the

▶ [Page layouts](#) in FDD Frilo.Document.Designer.