

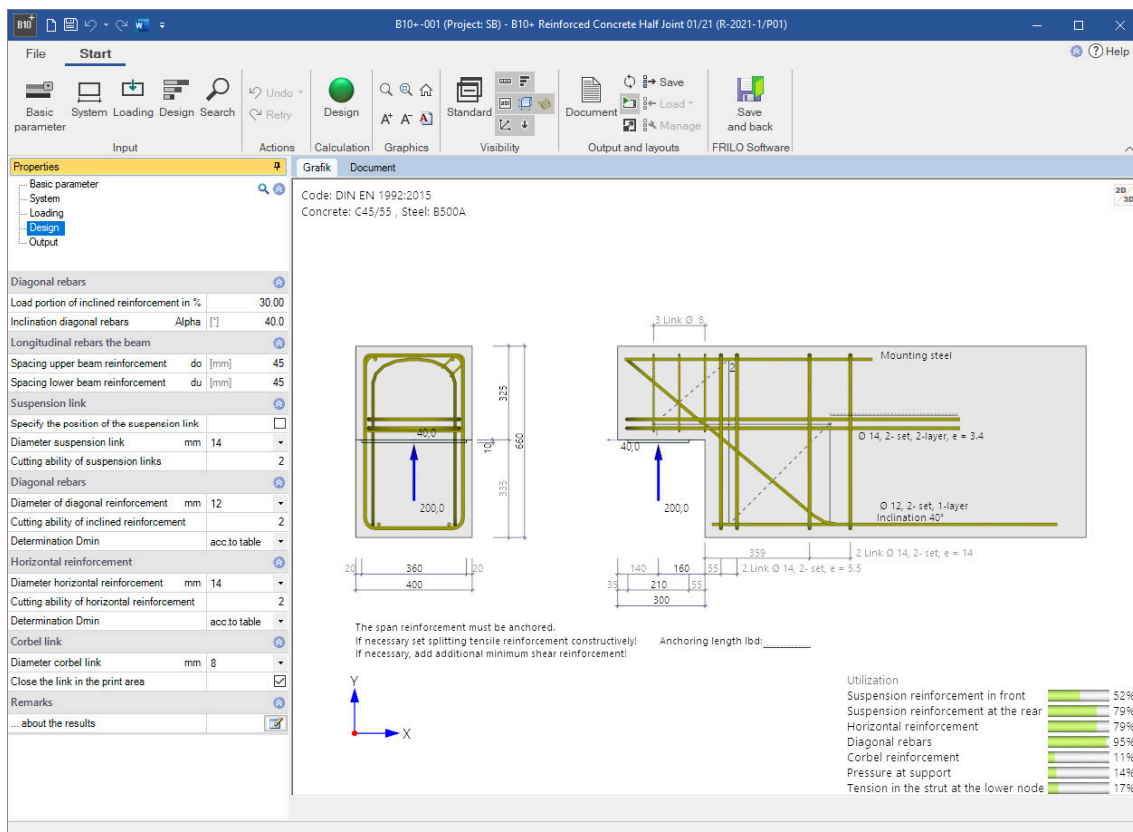
Reinforced Concrete Half Joint – B10+

FRILO Software GmbH

www.friilo.com

info@friilo.com

As of 04/12/2020



B10+ – Reinforced Concrete Half Joint

Contents

Anwendungsmöglichkeiten	3
Basis of calculation	4
Wizard	7
Basic parameters	7
System	8
Loading	9
Design	10
Results	11
Output	12

Basic Documentation – Overview

In addition to the individual program manuals, you will find basic explanations on the operation of the programs on our homepage www.frilo.com ▶ Support ▶ Articles/Information ▶ Basic operating instructions.

Anwendungsmöglichkeiten

The B10+ software application allows you to calculate dapped beam ends.

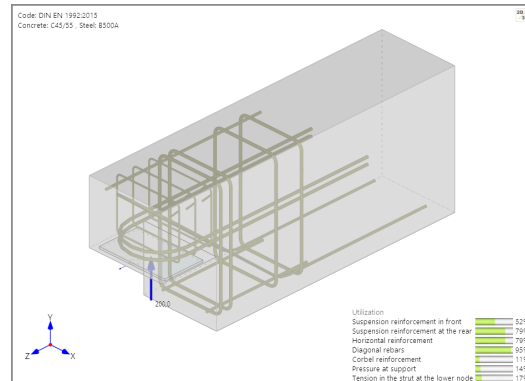
Available standards:

DIN EN 1992-1-1:2012/2013/2015

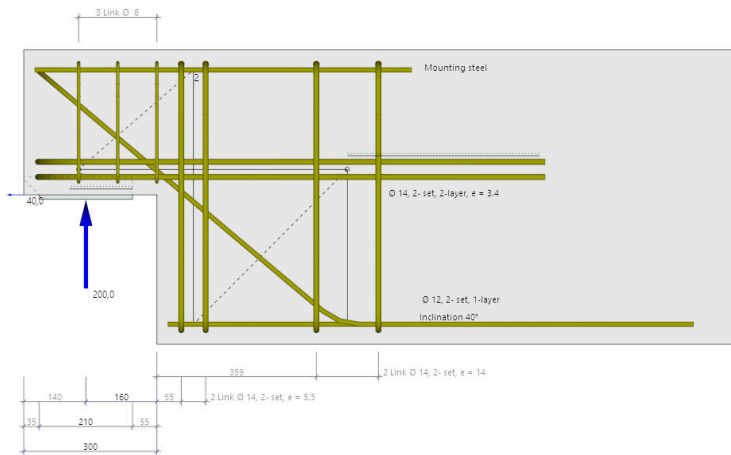
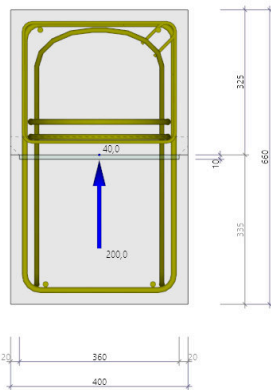
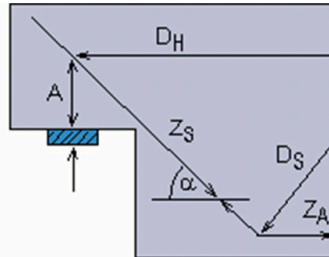
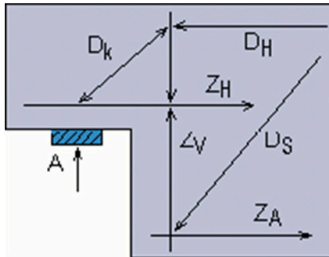
ÖNORM EN 1992-1-1:2011/2018

BS EN 1992-1-1:2015

EN 1992-1-1:2014



When using precast beams in reinforced concrete frame structures, dapped beams ends are often required in the bearing area to keep the floor structure as thin as possible. Because anchorage of the diagonal tie Z_s is difficult due to the geometrical conditions in strut-and-tie models with an inclined reinforcement portion of 100 %, a combined strut-and-tie model comprising perpendicular and inclined suspension reinforcement (see illustration) is selected under normal conditions.



- Calculation optionally in accordance with DAFStb¹ Booklet 599
- Strut-and-tie model combined of perpendicular and diagonal suspension reinforcement
- Percentage of inclined reinforcement can be selected
- Design of an additional load (transfer immediately in the support)
- Calculation of the reinforcement with representation of the reinforcement layout
- Verification of the anchoring of the horizontal reinforcement

¹ German Committee for Reinforced Concrete

Basis of calculation

Calculation in accordance with EN 1992-1-1

The calculation is based on a strut-and-tie model combined of perpendicular and inclined suspension reinforcement in accordance with DAfStb Booklet 599.

The design is performed with the rebar diameters specified by the user. The equilibrium in the strut-and-tie model is determined by iterative addition of the required stirrups and the recalculation of the centres of gravity of the reinforcement.

Strut-and-tie model consisting of inclined suspension reinforcement

The inclined model is always used in combination with the model of perpendicular suspension reinforcement to prevent shearing of the half joint along the inclined bars. This model is more suitable for mapping the actual load-bearing behaviour of higher beam corbels.

The software allows you to define a load-bearing portion of inclined reinforcement of 70 %. It is possible to specify the position of the center of gravity of the front suspension bracket.

Tensile force in the inclined reinforcement:

$$F_{ZS} = (F_{ed} - F_{1ed}) \cdot \text{inclined reinforcement portion}$$

Strut-and-tie model consisting of perpendicular suspension reinforcement

While the model of inclined suspension reinforcement results directly from the support geometry, the geometry of the model of perpendicular reinforcement is determined through the dimensioning of the nodes 1 (below) and 2 (above) of the inclined strut (D1), see illustration 3.

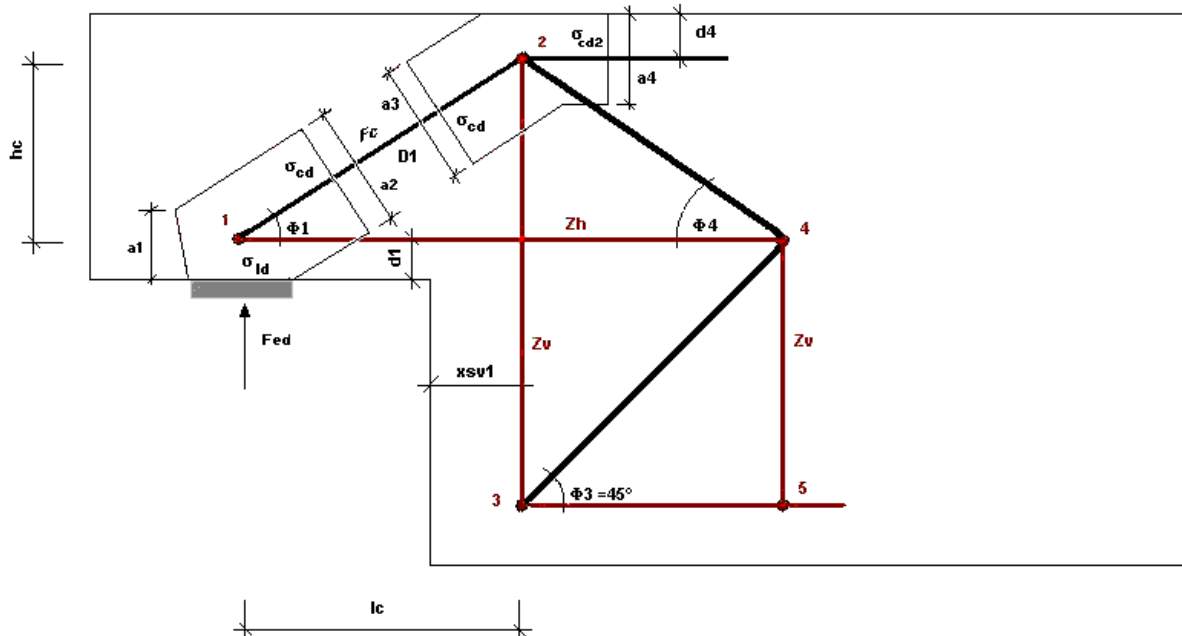


Illustration 3

First, the geometry of the strut-and-tie model is determined in accordance with illustration 3.

It is assumed that the stress limit $\sigma_{Rdmax} = k_2 \cdot v' \cdot f_{cd}$ in node 2 (stress σ_{cd2} depends on a_4) is complied with; k_2 and v' are assumed in accordance with the selected National Annex (NA).

- for Germany: $k_2 = 0.75, v' = 1.1 - f_{ck} / 500 \leq 1.0$

- for Austria: $k_2 = 0.9, v' = 1.0 - f_{ck} / 250 \leq 1.0$

The exact compression strut position with the dimensions of the nodes below and above is determined in the above expressions and the given border conditions such as the concrete cover and the centre of gravity of the suspension reinforcement and the horizontal reinforcement.

By defining unfavourable half joint dimensions and/or if a high number of reinforcement layers is required, an inclination of the compression strut below 30° or $>60^\circ$ can result. The software aborts the calculation in this case because a design based on such a strut-and-tie model is not permitted.

Compression strut inclination:

$$\Phi_1 = \text{atn}\left(\frac{hc}{lc}\right)$$

$$\sigma_{cd2} = \frac{F_{ZH}}{(b_k \cdot a_4)} \quad b_k = \text{half - joint width}; F_{ZH} = F_{ZV} \cdot \frac{l_c}{h_c}$$

Compressive strut force:

$$F_C = F_{ZV} / \sin(\Phi_1)$$

Horizontal forces due to the compressive strut geometry that are to be anchored:

$$F_{ZH} = (F_{ZV} + F_{1ed}) \cdot (lc / hc) + H_{ed}$$

Verification of the load-bearing capacity of the compressive concrete strut:

The load-bearing capacity of the compression strut is verified by compliance with the permissible stress on the (inclined) surface of the lower node.

Verification of bearing pressure:

The verification of the compressive stress underneath the load plate is based on EN 1992-1-1:

With the following conditions underneath the load plate:

$$\sigma_{ld} = \frac{F_{ed}}{l_p \cdot b_p} \leq \sigma_{rd} = k_2 \cdot v' \cdot f_{cd} \quad k_2 \text{ and } v' \text{ in accordance with the applicable National Annex (NA)}$$

- for Germany: $k_2 = 0.75, v' = 1.1 - f_{ck} / 500 \leq 1.0$

- for Austria: $k_2 = 0.9, v' = 1.0 - f_{ck} / 250$

and in the node below:

$$a1(1) = 2 \cdot d_1$$

$$a2(1) = \left(a1(1) \cdot \left(\frac{l_c}{hc} \right) + l_p \right) \cdot \sin(\Phi_1)$$

$$\sigma_{cd} = \frac{F_C}{a2(1) \cdot b_p} \leq \sigma_{rd} = k_2 \cdot v' \cdot f_{cd} \quad k_2 \text{ and } v' \text{ as with node 1 for bearing stress}$$

Model for the back anchorage of the horizontal force:

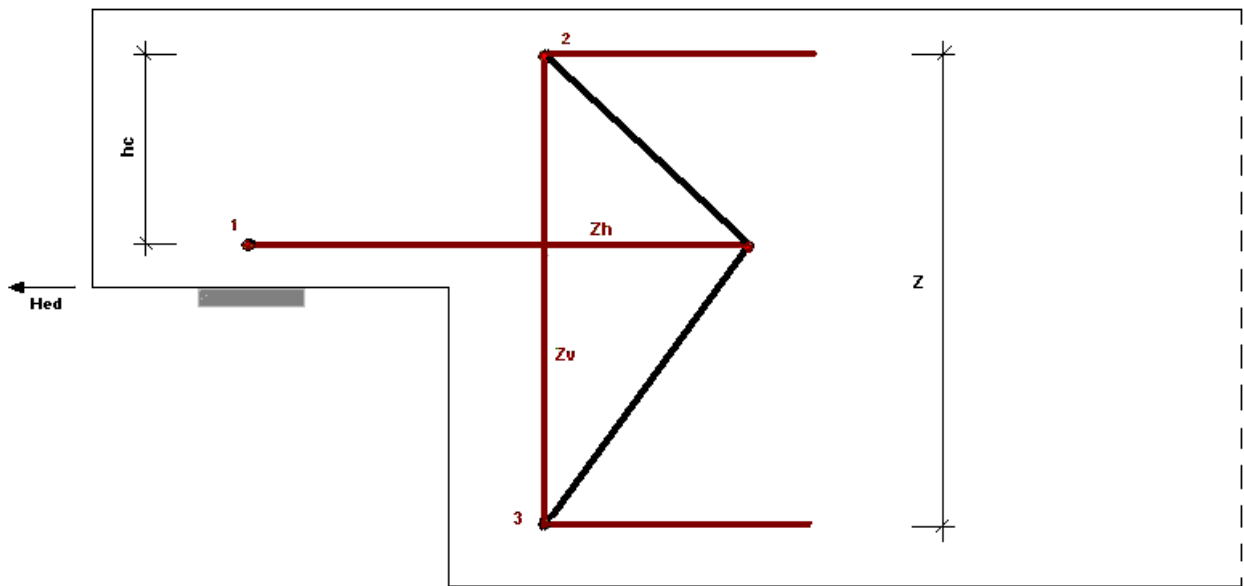


Illustration 4

Optionally, the back anchorage of a horizontal support reaction in the vertical suspension stirrups can be approached as shown in illustration 4 in accordance with /10/, Concrete Yearbook (Betonkalender) 2007, Part 2.

The following results for the tensile force of the vertical (front) suspension reinforcement:

$$F_{ZV} = (F_{ed} - F_{1ed}) \cdot (1 - \text{inclined reinforcement portion}) + H_{ed} \cdot \frac{hc}{z}$$

Reinforcement

The software applies a tensile splitting reinforcement in the form of vertical corbel stirrups, which is sufficient to bear the tensile splitting force F_{td} determined in accordance with /8/ 3.5.4.

If additional tensile splitting reinforcement should be required, it is to be applied with constructive measures.

Wizard

The quickest way to enter an item for the first time is with the [wizard](#).

Only the most important, basic item/system data is queried in compact form.

With such a basic system, the user immediately has a completely calculable system that can then be further developed/refined. The wizard is called by default when a new item is entered - this behavior can optionally be switched off.

Basic parameters

Concrete material

First, select the applicable [standard](#).

Depending on the selected standard, the corresponding material parameters - concrete and steel quality - are listed for selection.

For a precast member, mark the option, then you can also call up a dialog for entering precast-specific parameters / characteristic values.

Concrete cover

Optional können Sie hier festlegen, ob die Betondeckung an allen Seiten der Konsole gleich ist, oder ob sie differenziert eingebbar sein soll (die entsprechenden Eingabefelder werden dann eingeblendet).

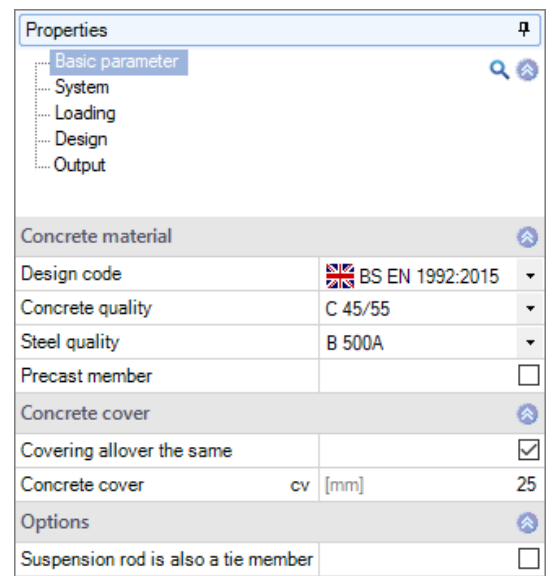
Options

Suspension rod is also a tie member

Select this option if the vertical suspension reinforcement is also to be used as a tie member (suspension of the horizontal force).

Horizontal reinforcement under transverse pressure

Select this option if the anchorage check of the horizontal reinforcement in the corbel should always be based on the assumption that the horizontal reinforcement in the corbel is under the influence of transverse pressure (transverse pressure is then applied). If this option is not selected, the transverse pressure is only applied if the horizontal reinforcement in the corbel is completely within the area of influence of the transverse pressure. The area of influence results from the load plate area including an edge area, which results from the load spread (under 45 °) up to the center plane of the lowest layer of the horizontal reinforcement (indicated in the graphic by a thin dashed line). If the transverse pressure is applied, a direct support is assumed (reduction of the required anchoring length to 2/3 of the original value according to NA Germany)



Properties	
Basic parameter	
System	
Loading	
Design	
Output	
Concrete material	
Design code	BS EN 1992:2015
Concrete quality	C 45/55
Steel quality	B 500A
Precast member	<input type="checkbox"/>
Concrete cover	
Covering all over the same	<input checked="" type="checkbox"/>
Concrete cover	cv [mm] 25
Options	
Suspension rod is also a tie member	<input type="checkbox"/>

System

Beam

Enter the beam dimensions.

b0	Web width
h0	Height of beam
bm	Slab width (optional)
hp	Slab height

Corbel

Eingabe der Konsolenmaße.

hk	Corbel depth
lk	Corbel length

Load slab

bp	Edge length of the load plate perpendicular to the console overhang
lp	Edge length of the load plate parallel to the console overhang
dp	Thickness of the load plate

Remarks

Call up the [comment editor](#). The comments are listed in the output under the system data.

Properties			
Basic parameter			
System			
Loading			
Design			
Output			
Beam			
Web width	b0	[mm]	400
Height of beam	h0	[mm]	660
Slab width	bm	[mm]	0
Slab height	hp	[mm]	0
Corbel			
Corbel depth	hk	[mm]	325
Corbel length	lk	[mm]	300
Load slab			
Load slab breath	bp	[mm]	360
Load slab length	lp	[mm]	210
Load slab thickness	dp	[mm]	10
Remarks			
...on system			

Loading

Fed	Vertical support reaction (design value)
Hed	Horizontal support reaction (design value)
F1ed	Close-to-support load that is not up anchored (design value)

Load application point

e1	Horizontal distance of the vertical load from the notch edge.
Hed at the height of the horizontal reinforcement	Choice of whether the horizontal force Hed should be set at the level of the center of gravity of the horizontal reinforcement or at the level of the lower edge of the corbel. <i>Note: In order to take into account any possible constraining forces in the horizontal direction it is recommended: $H, ed \geq 20\%$ (ÖNorm-EN 10%) of F, ed.</i>

Properties		
Basic parameter		
System		
Loading		
Design		
Output		
Load		
Vertical load	Fed	[kN] 200.0
Lateral load	Hed	[kN] 40.0
Vertical load close to the support	F1ed	[kN] 0.0
Load application point		
Distance vertical load	e1	[mm] 160
Hed at the height of the horizontal reinforcement		<input type="checkbox"/>

Design

Diagonal rebars

Load share (in%) that the inclined reinforcement should take up.

If a load share > 0% (up to a maximum of 70%) is entered, the angle of the inclined reinforcement to the horizontal (25 ° - 75 °) must then be specified.

Longitudinal beam reinforcement

Distance of the center of gravity of the upper / lower longitudinal beam reinforcement from the upper / lower edge of the beam to define the position of the pressure node in the compression strut.

Suspension link

Option for specifying the position of the center of gravity of the front suspension link in relation to the notch edge of the beam. Defines the truss model with regard to anchoring area of the lower longitudinal beam reinforcement.

Selection of the diameter and input of the number of shear faces of a layer of the suspension link.


Horizontal reinforcement

Selection of the diameter and input of the number of shear faces of a layer of the horizontal reinforcement.

Determination Dmin You can choose whether the mandrel diameter Dmin is to be determined according to the table 8.1 DE or according to equation (8.1). When calculating according to equation (8.1), sometimes a smaller permissible mandrel diameter Dmin can be determined than according to the table (depending on the utilization of the reinforcement).

Corbel link

Selection of the diameter. You can choose whether the corbel links should be closed with hooks in the pressure area or not.

Properties	
Basic parameter	
System	
Loading	
Design	
Output	
Diagonal rebars	
Load portion of inclined reinforcement in %	0.00
Longitudinal rebars the beam	
Spacing upper beam reinforcement do [mm]	45
Spacing lower beam reinforcement du [mm]	45
Suspension link	
Specify the position of the suspension link	<input type="checkbox"/>
Diameter suspension link mm	12
Cutting ability of suspension links	2
Horizontal reinforcement	
Diameter horizontal reinforcement mm	12
Cutting ability of horizontal reinforcement	2
Determination Dmin	acc.to table
Corbel link	
Diameter corbel link mm	8
Close the link in the print area	<input checked="" type="checkbox"/>
Remarks	
... about the results	

Results

The following results are determined:

- The node dimensions of the lower and upper nodes.
- The dimensions (horizontal and vertical length) of the strut and the angle of the strut to the horizontal.
- The geometrical dimensions of the determined framework as well as the forces occurring therein.
- It is checked whether a reasonable framework results and whether the boundary conditions (min. inclination of the strut = 30 °, max. inclination of the strut = 60 °) are observed.
- Determination of the existing stress under the load plate and on the (inclined) node surface of the lower node (verification of the load-bearing capacity of the compression strut) and comparison with the permissible values.
- Determination of the anchorage length of the horizontal reinforcement.
- Determination of the necessary anchorage length of the horizontal reinforcement (in the corner area and in the beam) including output of intermediate values for better traceability of the results.
- Ermittlung der erforderlichen Anzahl der Bewehrungslagen und der Achsabstände für die Aufhängebewehrung vorn und hinten, für die Horizontalbewehrung, für die Schrägbewehrung (wenn gewählt) sowie für die Konsolbewehrung (Spaltzugbewehrung).
Determination of the required number of reinforcement layers and the center distances for the suspension reinforcement at the front and rear, for the horizontal reinforcement, for the inclined reinforcement (if selected) and for the corbel reinforcement (Splitting tensile reinforcement)
- It is checked whether the geometric requirements for the reinforcement (permissible min. clear distance and min. Bending roll diameter/mantrel diameter) are met.
- Graphic representation of the determined reinforcement.
- If verifications or geometric requirements are not complied with, the verification traffic light is colored red and a corresponding note is given. The non-complied requirements / verifications are marked accordingly in the printout.

Output

You call up the output document by clicking on the Document tab (above the graphic).

See also [Output and printing](#).

FRILO Software GmbH
 Stuttgarter Str. 40
 70469 Stuttgart

Tel.: +49 711 810020
 Fax: +49 711 8100230

Projekt: SB
 Position: B10+001
 11/30/2020

Seite: 1

Position: B10+001

Reinforced Concrete Half Joint B10+ 01/21 (FRILO R-2021-1/P01)

System
 System graphic

The span reinforcement must be anchored.
 If necessary set splitting tensile reinforcement constructively!
 If necessary, add additional minimum shear reinforcement!

Anchoring length l_{bd}: _____

Geometry

Web width	b ₀ = 400 mm	Height of beam	h ₀ = 660 mm
Corbel depth	h _k = 325 mm	Corbel length	l _k = 300 mm
Load slab breath	b _D = 360 mm	Load slab length	l _D = 210 mm
Load slab thickness	d _D = 10 mm		