

# Output and printing

## Contents

Print	2
Print all	2
Print preview	3
Page header	4

## Basic Documentation – Overview

In addition to the individual program manuals, you will find basic explanations on the operation of the programs on our homepage [www.frilo.com](http://www.frilo.com) in the Campus-download-section.

### Note:

With the [FRILO Document Designer](#) the documents of a project can be organized much easier and more comfortable. In addition to the static outputs from the Frilo calculation programs, external formats and applications can also be integrated into the document using FDD. FDD offers practical functions and extensive layout options

## Print

Menu options ▶ File ▶ Print ...

Launches the print, taking into account the output profile. In the print dialog, select the desired printer and you can also - if required - change/define the properties of your printer (paper size, portrait or landscape format, page margins, etc.). Please refer to your printer manual for more information.

*Note: In programs with an older user interface, the file menu looks similar, although the menu items [Print All](#) and [Print Preview](#) are also listed here.*

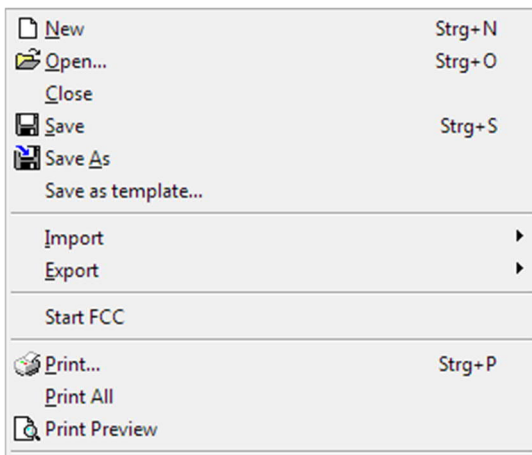
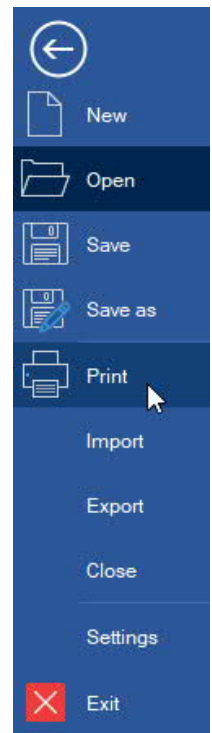


Fig.: File-menu in older programs.



You can also click on the printer-icon to start the print.

### Output profile

Programs with more complex output options have an "output profile", which you can use to determine or restrict the scope of the output.

## Print all

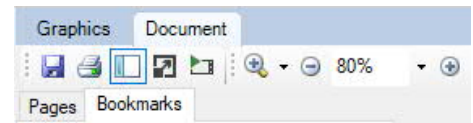
Menu options ▶ File ▶ Print All

All data selected for output in the output profile are printed.

## Print preview

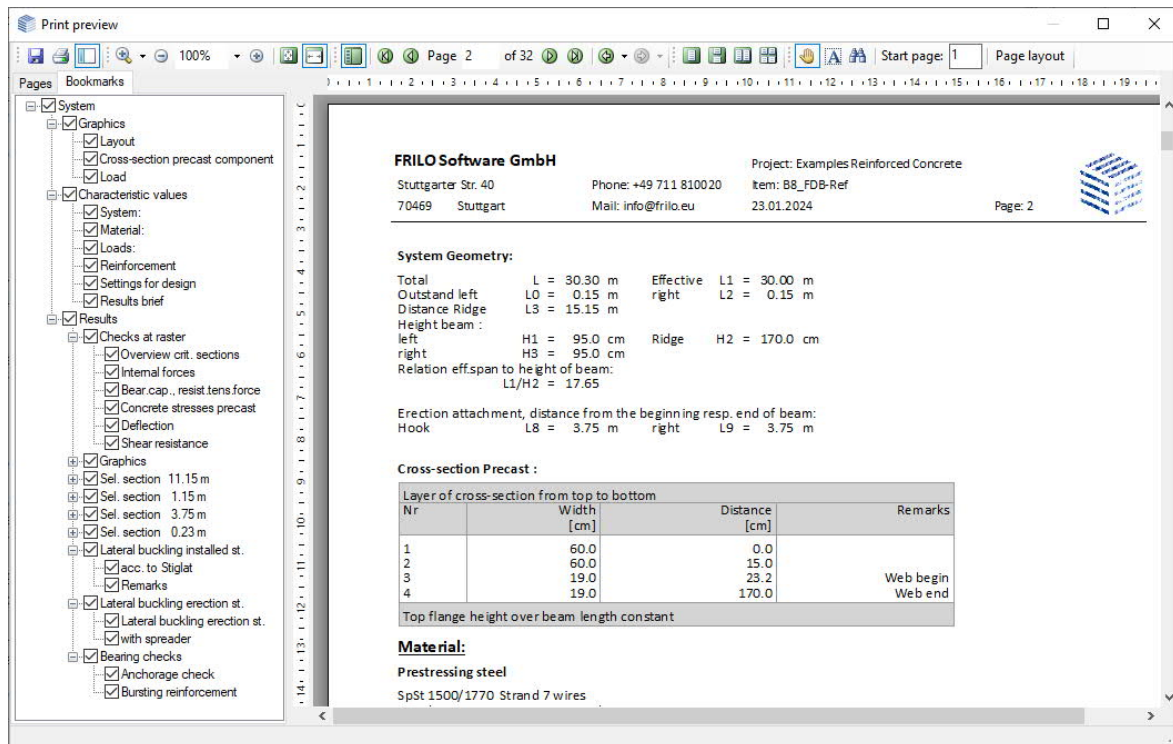
Note:

The menu item **File** ▶ **Print Preview** is only available in programs with the "old" interface. In the PLUS programs, you call up the page view via the "Document" tab - see illustration on the right.



Menu options ▶ **File** ▶ **Print Preview**

The print preview allows the user to check the page layout before printing. Operation is based on the usual PDF conventions.



The whole page is shown. Scrolling back or forth displays the previous or subsequent page. The user can select the page to be displayed also by clicking on the corresponding thumbnail in the screen section.

The thumbnails and bookmarks can be hidden or displayed.

Various zoom (magnifying glass button) and page view functions are available.

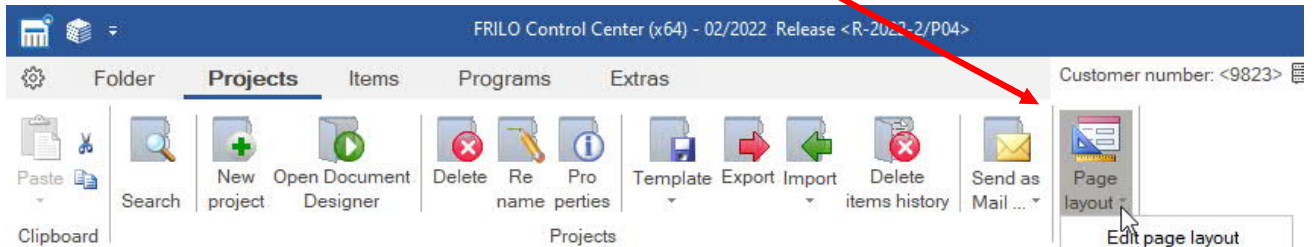
Hints to the functions of the buttons are displayed in the form of tooltips when the user moves the mouse cursor over the button.



Starts the output on a printer.

## Page header

You can define your own page header in the [FRILO Control Center](#) ▶ Pagelayout or in the [Document Designer](#), if this application is installed.



*Note: If documents for individual projects were generated by a demo installation with the Document Designer, these must first be deleted if the Document Designer is not licensed. Only then can the page layout be called up in the Frilo Control Center.*

